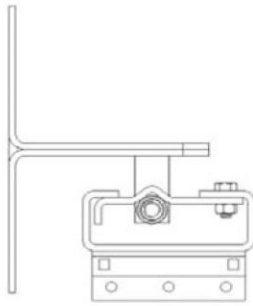
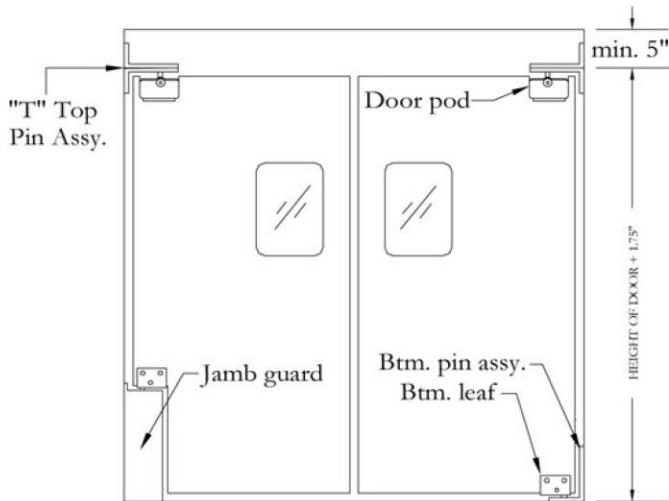


INSTALLATION INSTRUCTIONS & PARTS DIAGRAM

"T" TOP HARDWARE



JAMBS MUST BE SQUARE AND PLUMB
A MINIMUM OF 3-1/2 INCH WIDE JAMBS
REQUIRED TO MOUNT HARDWARE



1. Measure width and height of framed opening and compare with dimensions given at time of ordering. (This model was cut to the dimensions given by the customer and is not adaptable to fit into a different size of opening.)
2. Position bottom pin on floor and center on side jamb. Secure to jamb using (4) screws supplied. Bottom pin must be secured to floor using (2) 3/8" x 2-1/4" anchors supplied. "T" Top pin assembly secures to side jamb (as shown in diagram) with (8) screws supplied.
3. If a jamb guard is supplied, refer to the installation instructions supplied with the jamb guard.
4. Slip door over bottom pin and lift slightly to slide door pod over bearing plate. Line up holes and insert bolts supplied. Partially install lock nuts, move door to closed position and secure lock nuts.
5. Install covers and secure. (4) screws supplied per door.

NOTE: Bottom pin assembly must be secured to floor.

NOTE: HOLLOW METAL JAMBS DRILL 7/32 PILOT HOLE FOR 9 GA. AND THINNER MATERIAL

-- "T" Top Pin Assy

- (8) 1/4" - 20 x 1" phil. flt hd. thread cutting screws
- (8) #14 - 1-1/2" phil. flt hd. sheet metal / wood screws

-- Bearing Plate with (2) 5/16 - 18 screws, (2) 5/16 - 18 lock nuts

-- 3/8" Axle

-- (2) Rollers

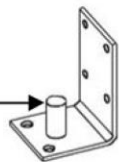
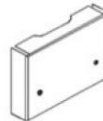
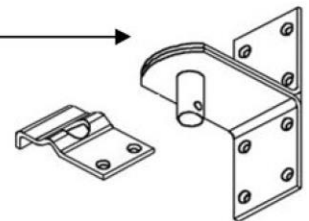
-- Klipring

-- (2) Aluminum Covers, (4) screws

-- (2) SS Covers, (4) screws

-- (2) ABS Covers, (4) screws

-- Bottom Pin Assy (4) of each fastener listed under (2) floor anchors



Strip-Curtains.com