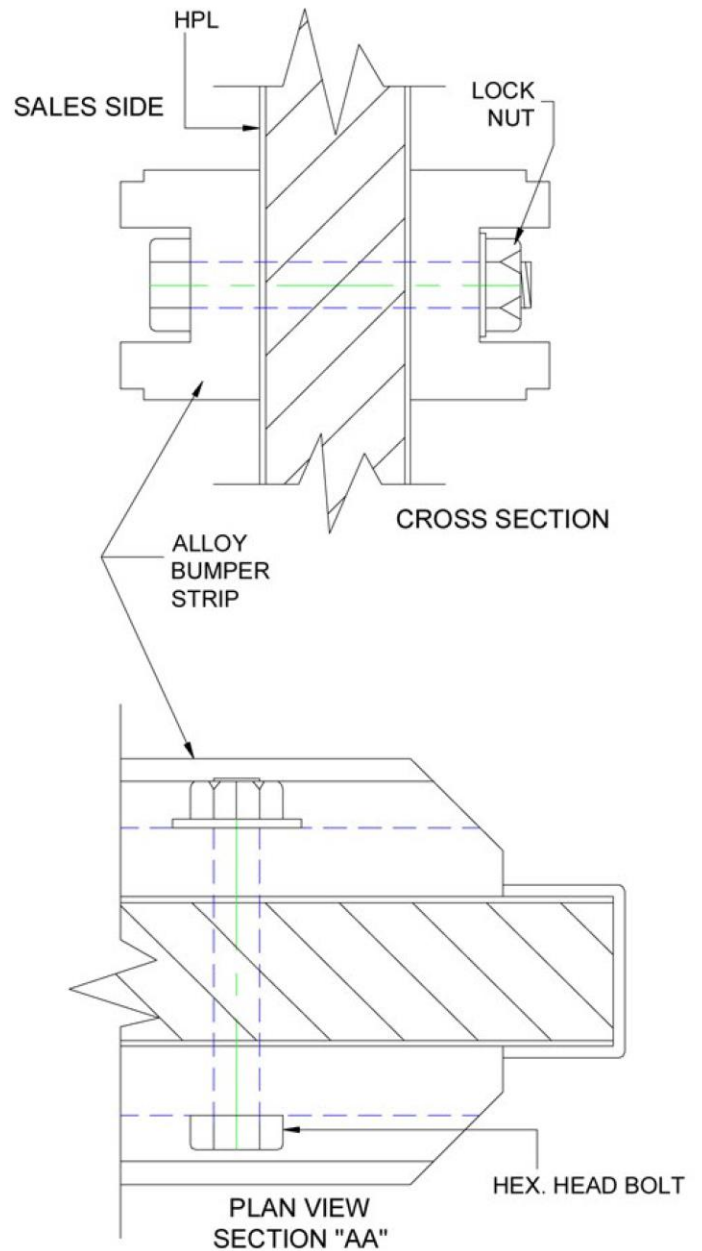
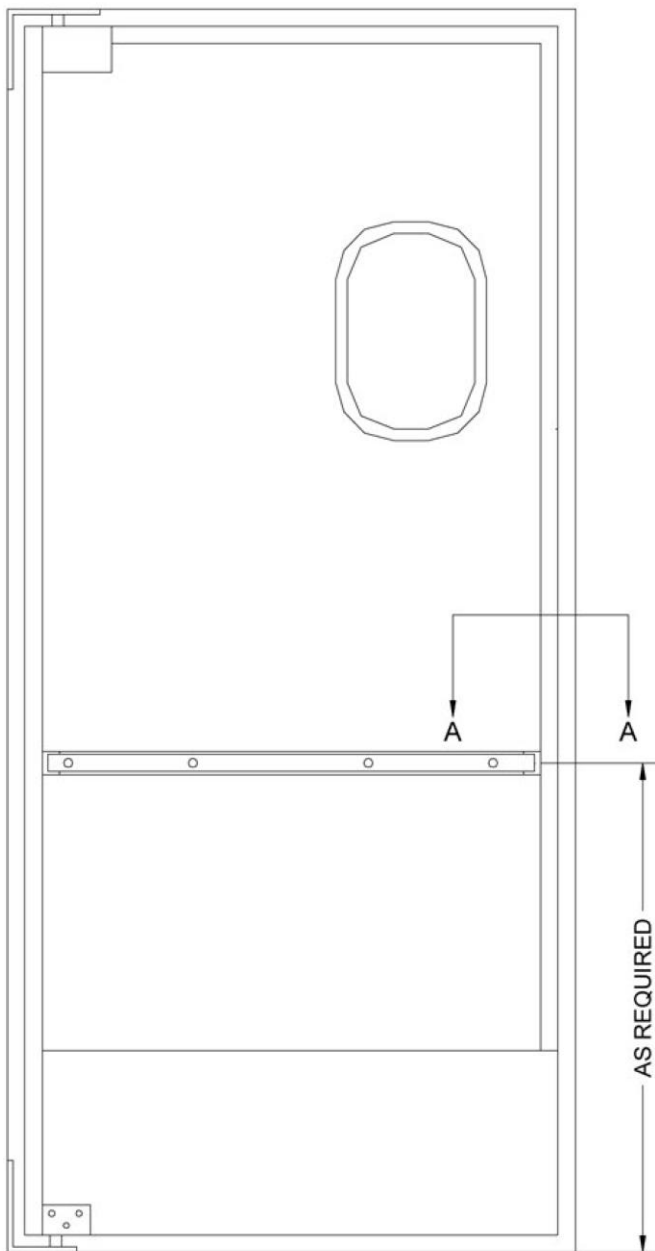


FIELD INSTALLATION INSTRUCTIONS

MOUNTING A BUMPER STRIP

HEAVY WEIGHT DOORS



INSTRUCTIONS:

1. POSITION BUMPER STRIP AT DESIRED HEIGHT
2. USE BUMPER STRIP AS A TEMPLATE FOR DRILLING 9/32" HOLES THRU DOOR FACE
3. INSTALL BUMPER STRIPS

NOTE: DRILL FROM SALES SIDE AND USE BACK UP BLOCKS TO PREVENT CHIPPING OF PLASTIC LAMINATE